



**Evita Studio**

Presents

*Audrey Anne*

[www.evitastudio.com](http://www.evitastudio.com)

Email: [t.s.evita.studio@gmail.com](mailto:t.s.evita.studio@gmail.com)



## Our Story

I have had a dream to be surrounded by talented, high-vibrational women. I planned to open a business to give them a platform for their talent and creativity. It just took me a little courage to get started.

My first step was at the beginning of 2022, when I dared to look for my favorite Hungarian fashion designer, Zsuzsi Csillag, CEO of Suel, if she wanted to participate in my first venture.

She said yes, and I ended up among the most colorful, smartly designed knitted collections. I must add, it was difficult not to buy up all the clothes.

I got inspiration and guidance from her and continued to look for girls who have the heart, talent and vision to give the world something unique.

I asked AudryAnne, who is famous about her clean, classic, elegant design, to join to my mission and she said yes as well, and she designed the most authentic, solo, linen collection just for me.

I had the clothes, I just needed someone else who is also as unique as those girls and has an idea to design colorful jewelry for these dresses.

Eszter, the founder of Everything You Can Imagine Is Real (EYCIIR), a visionary painter whose painting is already well known worldwide for her authentic figures, accepted my invitation and sent me a wonderful collection of figurative jewelry with her own hidden story inside.

Here I am with the exceptional opportunity to show the world three talented women, with their absolute unique, remarkable design.

Because we are not just a gorgeous body, but also a beautiful mind and a diamond heart, and we deserve the respect as such.

Evita Studio - Independent, Feminine and unique in every inch.

*Dr. Szilvia Toth*

Founder of Evita Studio and T.S.Evita Artworks

International Women Rights Advocate



- Carrie long floral skirt
- 100% Viscose
- **Style:** 110
- **Size:** S, M, XL.

For more info, please visit [www.evitastudio.com](http://www.evitastudio.com)

*The floral  
pattern  
collection  
from  
Audry Anne*

Frida Shirt  
**Style: 002**



Serena white  
pants  
**Style: 006**

Bronte Blouse  
**Style: 003**



ALL ITEMS ARE NATURAL, SUSTAINABLE AND HANDMADE

For more info, please visit [www.evitastudio.com](http://www.evitastudio.com)

Carrie skirt  
**Style: 010**



Bronte floral pattern  
blouse 100%  
Viscose  
**Style:** 003  
Size: S, M.



For more info, please visit [www.evitastudio.com](http://www.evitastudio.com)



ALL ITEMS ARE NATURAL, SUSTAINABLE AND HANDMADE





Frida floral pattern  
ruffled blouse  
100% Viscose  
**Style: 002**  
Size: S, M, L.



For more info, please visit [www.evitastudio.com](http://www.evitastudio.com)

ALL ITEMS ARE NATURAL, SUSTAINABLE AND HANDMADE

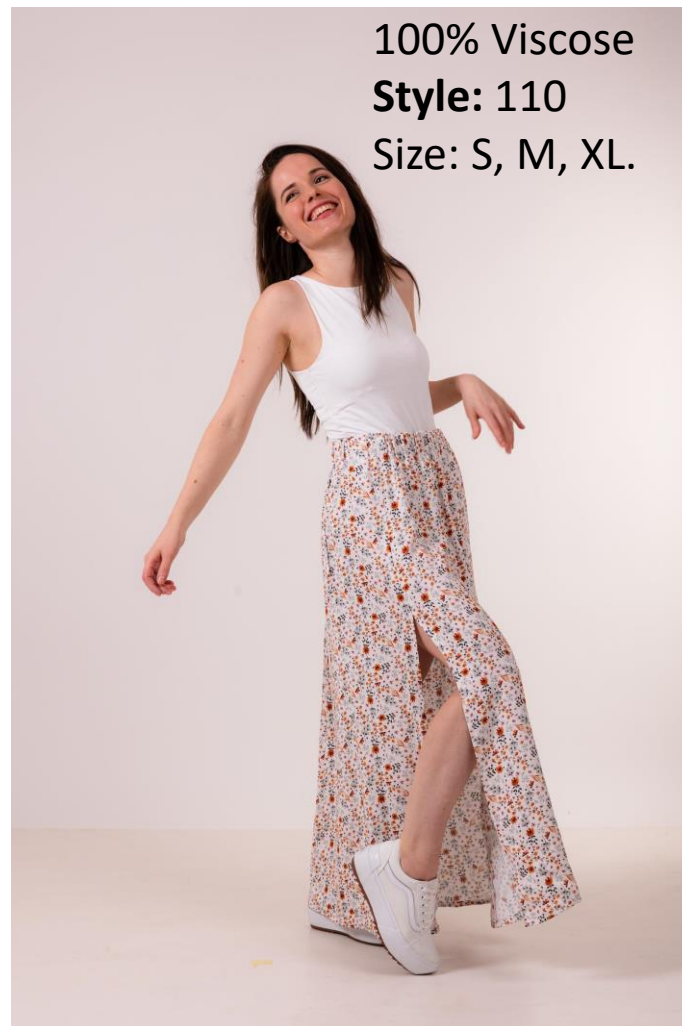


## Carrie long floral skirt

100% Viscose

**Style:** 110

**Size:** S, M, XL.



For more info, please visit [www.evitastudio.com](http://www.evitastudio.com)

ALL ITEMS ARE NATURAL, SUSTAINABLE AND HANDMADE

*The Chocolate  
color  
collection  
from  
Audry Anne*



Martina  
sport pants  
**Style: 018**

Diana Shirt  
with knot  
**Style: 001**



Serena Pants:  
**Style: 006**



Rosalind brown  
button-up skirt  
**Style: 009**





For more info, please visit [www.evitastudio.com](http://www.evitastudio.com)

ALL ITEMS ARE NATURAL, SUSTAINABLE AND HANDMADE



Rosalind button-up  
ribbon skirt  
55% linen- 45% cotton  
**Style:** 009  
**Size:** S, M, L.



ALL ITEMS ARE NATURAL, SUSTAINABLE AND HANDMADE

For more info, please visit [www.evitastudio.com](http://www.evitastudio.com)

*Our  
Trousers  
collection  
from  
AudryAnne*



Martina  
pants  
**Style: 018**

For more info, please visit [www.evitastudio.com](http://www.evitastudio.com)



Marion  
Embroidered  
Shirt  
**Style: 013**

Serena  
pants  
**Style: 006**

ALL ITEMS ARE NATURAL, SUSTAINABLE AND HANDMADE



Emma pants  
**Style: 017**



- Emma Palazzo trousers with stripes
- 50% linen – 50% Cotton
- **Style: 017**
- Size: S, M, XL

For more info, please visit [www.evitastudio.com](http://www.evitastudio.com)



**ALL ITEMS ARE NATURAL, SUSTAINABLE  
AND HANDMADE**

Martina loose fit work out pants with  
V-cut finishing

- 55% linen – 45% cotton
- **Style: 018**
- Size: S, M, L.

For more info, please visit [www.evitastudio.com](http://www.evitastudio.com)



Serena white sporty  
trousers  
55% linen- 45% cotton  
**Style:** 006  
Size: S, M, XL



ALL ITEMS ARE NATURAL, SUSTAINABLE AND HANDMADE



Emma Palazzo trousers with stripes

50% linen – 50% Cotton

**Style: 017**

Size: S, M, XL

ALL ITEMS ARE NATURAL, SUSTAINABLE AND HANDMADE

For more info, please visit [www.evitastudio.com](http://www.evitastudio.com)



Elsie asymmetric dress  
**Style: 012**



Rose dress  
**Style: 011**

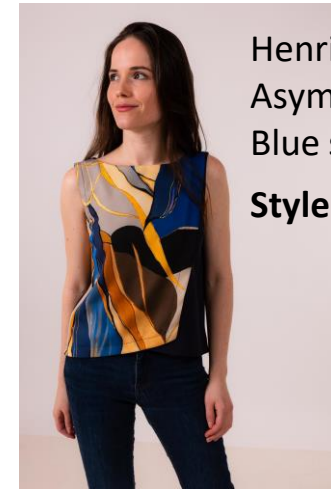


*The Royal Blue and Figure Pattern collection from Audry Anne*

Marion Handmade Embroidered Shirt  
**Style: 013**



Hedy Romantic long dress  
**Style: 008**

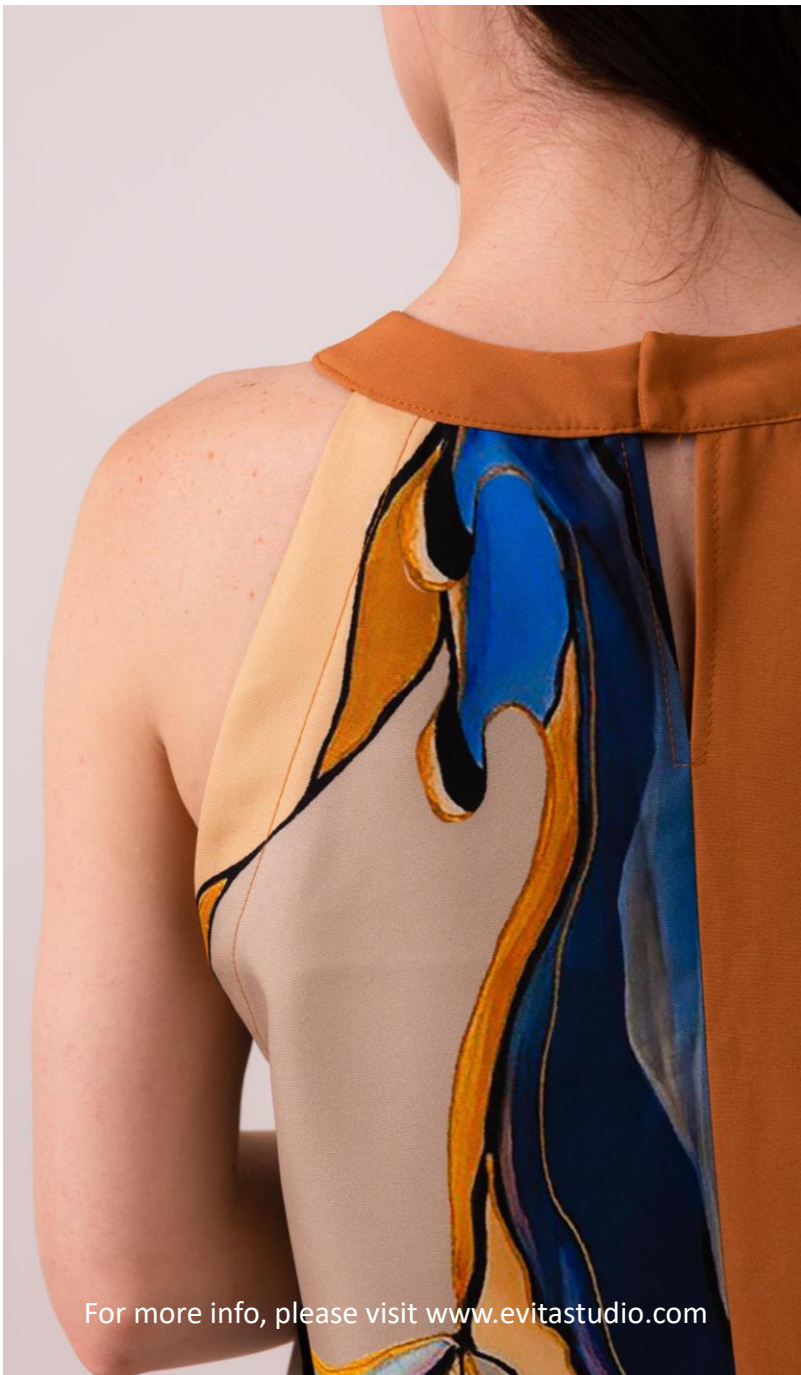


Henrietta Asymmetric Blue shirt  
**Style: 015**

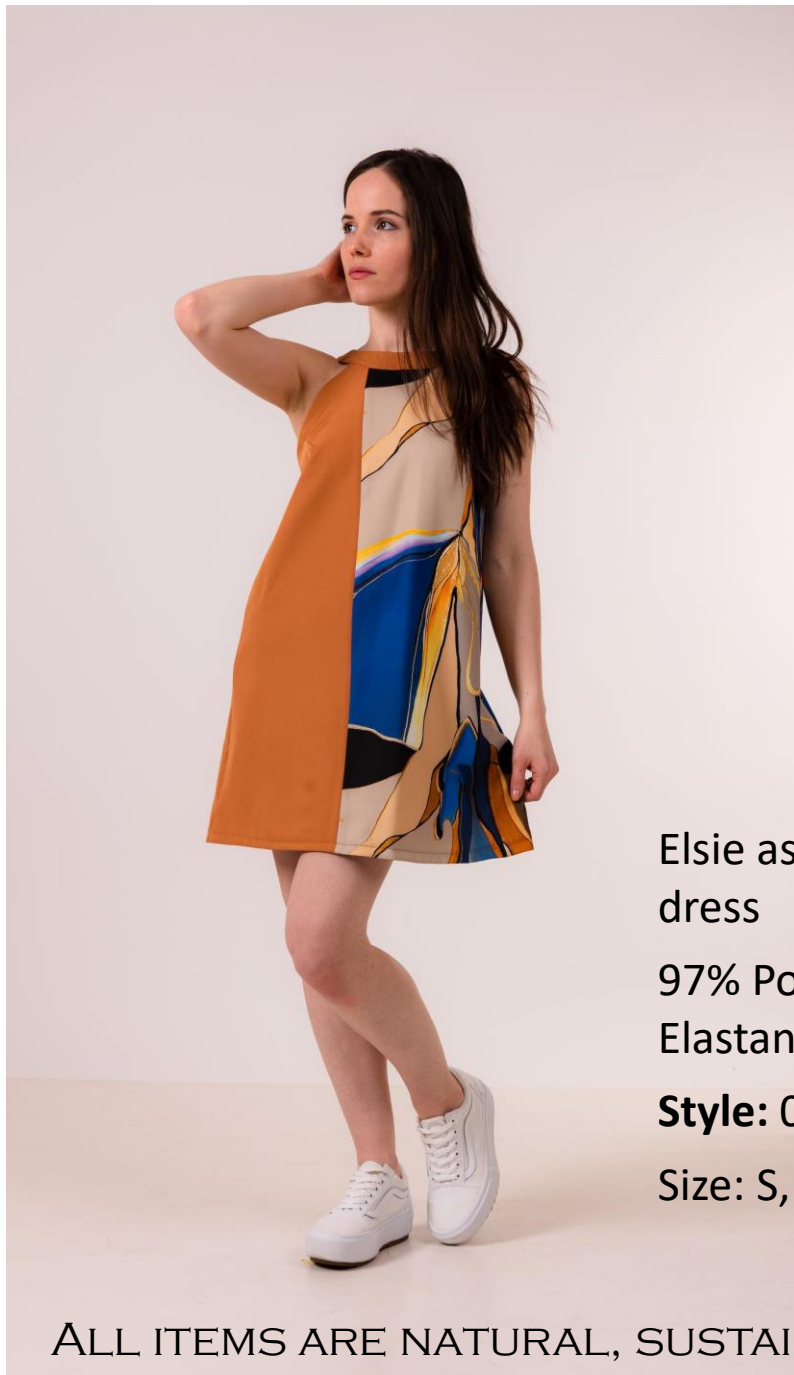
ALL ITEMS ARE NATURAL, SUSTAINABLE AND HANDMADE

For more info, please visit [www.evitastudio.com](http://www.evitastudio.com)





For more info, please visit [www.evitastudio.com](http://www.evitastudio.com)

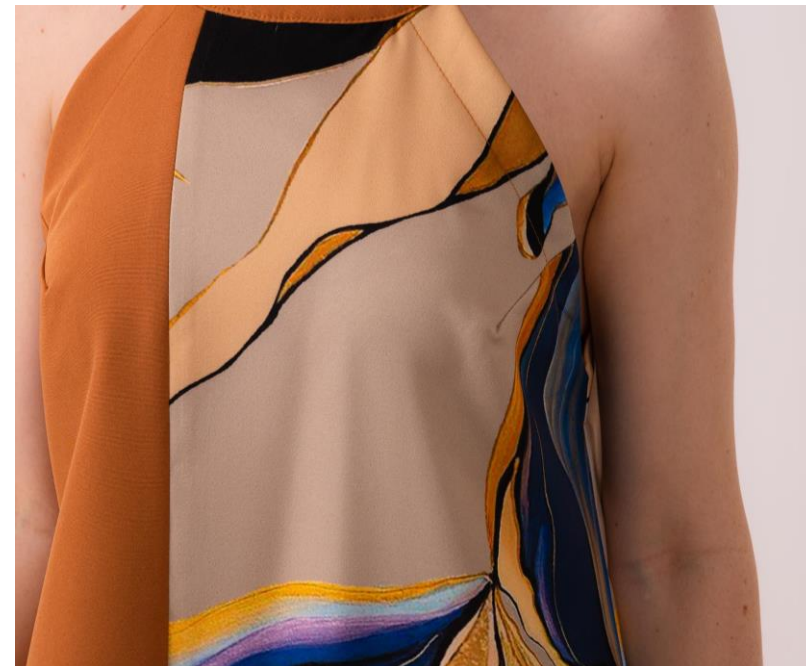


Elsie asymmetrical  
dress

97% Poliester 3%  
Elastane

**Style: 012**

Size: S, M, L.



ALL ITEMS ARE NATURAL, SUSTAINABLE AND HANDMADE



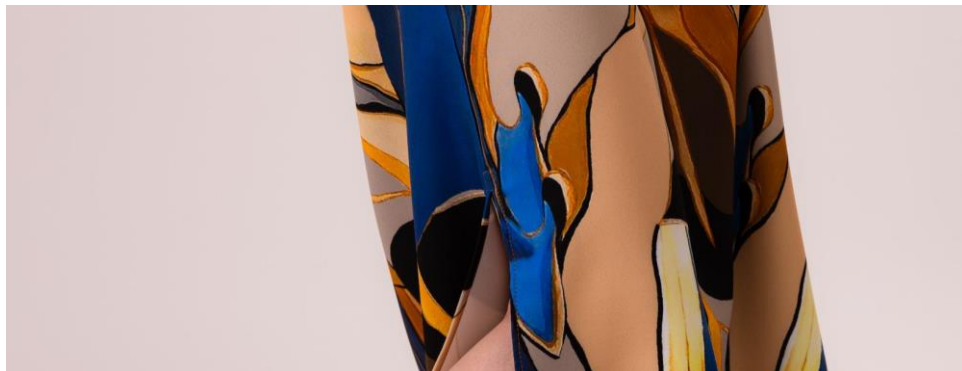
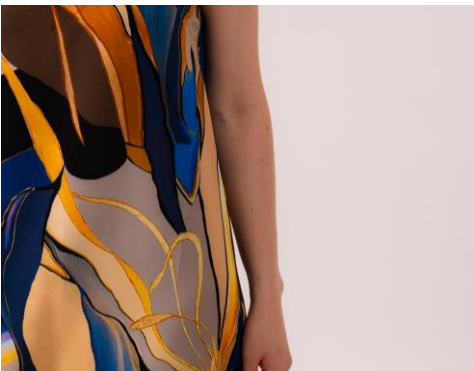
- Elsie asymmetrical dress
- 97% Poliester 3% Elastane
- **Style:** 012
- **Size:** S, M, L.

For more info, please visit [www.evitastudio.com](http://www.evitastudio.com)



Hedy Romantic, figure pattern long dress

- 97% Poliester – 3% Elasten
- **Style:** 008
- **Size:** S, M.



For more info, please visit [www.evitastudio.com](http://www.evitastudio.com)

ALL ITEMS ARE NATURAL, SUSTAINABLE AND HANDMADE

- Hedy Romantic, figure pattern long dress
- 97% Poliester – 3% Elasten
- **Style:** 008
- **Size:** S, M.

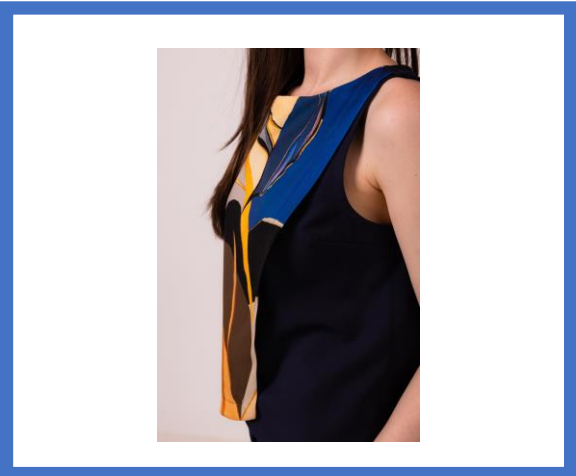
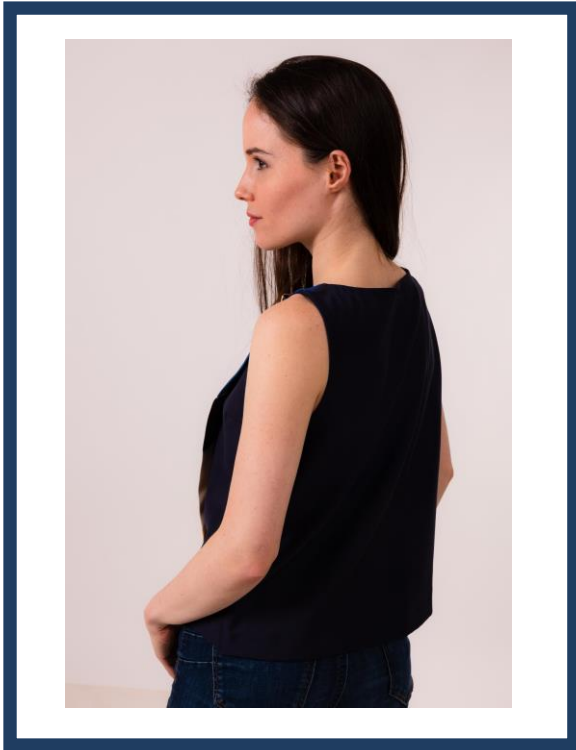


For more info, please visit [www.evitastudio.com](http://www.evitastudio.com)



For more info, please visit [www.evitastudio.com](http://www.evitastudio.com)

ALL ITEMS ARE NATURAL, SUSTAINABLE AND HANDMADE



ALL ITEMS ARE NATURAL, SUSTAINABLE AND HANDMADE

Marion  
Handmade  
Embroidered  
Shirt  
55% Linen – 45% Cotton  
Style: 013  
Size: S, M, XL.



For more info, please visit [www.evitastudio.com](http://www.evitastudio.com)

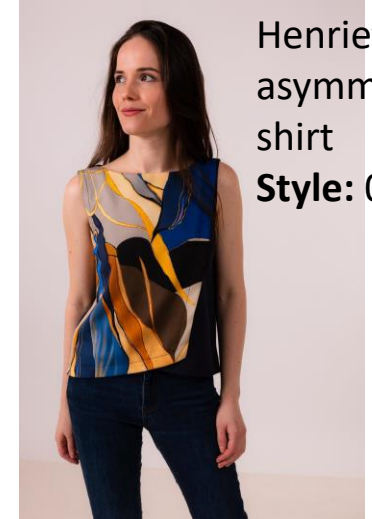


Hypatia  
white shirt  
**Style: 016**

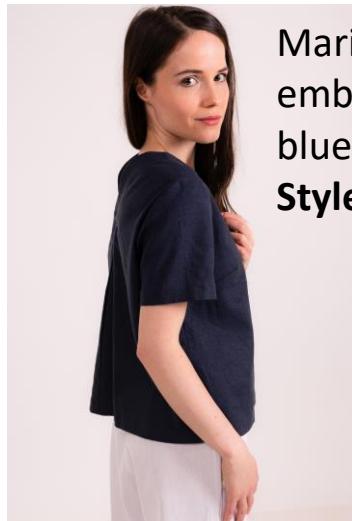
*The shirt  
collection  
from  
Audryanne*



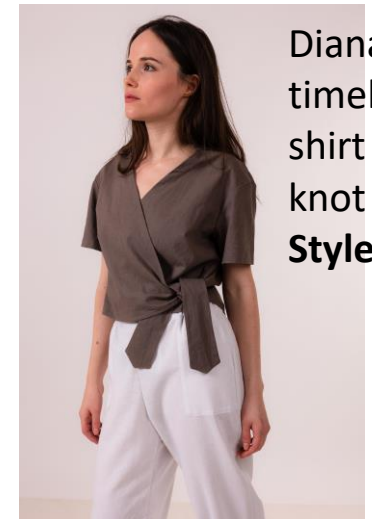
Marion  
embroidered  
white shirt  
**Style: 014**



Henrietta  
asymmetrical  
shirt  
**Style: 015**



Marion shirt  
embroidered  
blue shirt  
**Style: 013**



Diana  
timeless  
shirt with  
knot  
**Style: 001**

ALL ITEMS ARE NATURAL, SUSTAINABLE AND HANDMADE

For more info, please visit [www.evitastudio.com](http://www.evitastudio.com)





Marion embroidered  
white shirt  
55% Linen – 45% cotton  
**Style:** 014  
Size: S, M, XL.



For more info, please visit [www.evitastudio.com](http://www.evitastudio.com)

ALL ITEMS ARE NATURAL, SUSTAINABLE AND HANDMADE



Hypatia modern cut white  
shirt

55% linen 45% cotton

**Style:** 016

**Size:** S, M, L.



For more info, please visit [www.evitastudio.com](http://www.evitastudio.com)

ALL ITEMS ARE NATURAL, SUSTAINABLE AND HANDMADE

Amelia  
Jumpsuit  
Style: 004



*The full body  
dress  
collection  
from  
Audry Anne*

Meghan  
Jumpsuit  
Style: 005



Angie dress  
Style: 007



For more info, please visit [www.evitastudio.com](http://www.evitastudio.com)

ALL ITEMS ARE NATURAL, SUSTAINABLE AND HANDMADE

Meghan Half-sleeve jumpsuit

50% linen 50% cotton

**Style:** 005

Size: S, M, L.



For more info, please visit [www.evitastudio.com](http://www.evitastudio.com)

Amelia Sleeveless  
Jumpsuit  
55% Linen- 45%  
Cotton  
**Style:** 004  
**Size:** S, M.



For more info, please visit [www.evitastudio.com](http://www.evitastudio.com)

ALL ITEMS ARE NATURAL, SUSTAINABLE AND HANDMADE



- Amelia Sleeveless Jumpsuit
- 55% Linen- 45% Cotton
- **Style:** 004
- **Size:** S, M.



Meghan Half-sleeve  
jumpsuit  
50% linen 50% cotton  
**Style: 005**  
Size: S, M, L.



ALL ITEMS ARE NATURAL, SUSTAINABLE AND HANDMADE

Angie dress  
100% Viscose  
**Style:** 007  
Size: S, M, L.



For more info, please visit [www.evitastudio.com](http://www.evitastudio.com)

ALL ITEMS ARE NATURAL, SUSTAINABLE AND HANDMADE





Angie dress  
100% Viscose  
**Style:** 007  
**Size:** S, M, L.

For more info, please visit [www.evitastudio.com](http://www.evitastudio.com)

For orders and inquiries:

Email:

[t.s.evita.studio@gmail.com](mailto:t.s.evita.studio@gmail.com)

Phone:

+353 87 6050354

[www.evitastudio.com](http://www.evitastudio.com)

Address:

13, Clifden Court,  
Clifden, H71F680,  
Ireland



*Audrey Anne*  
**Fashion for us**

**Independent**  
**feminine**  
**Unique**